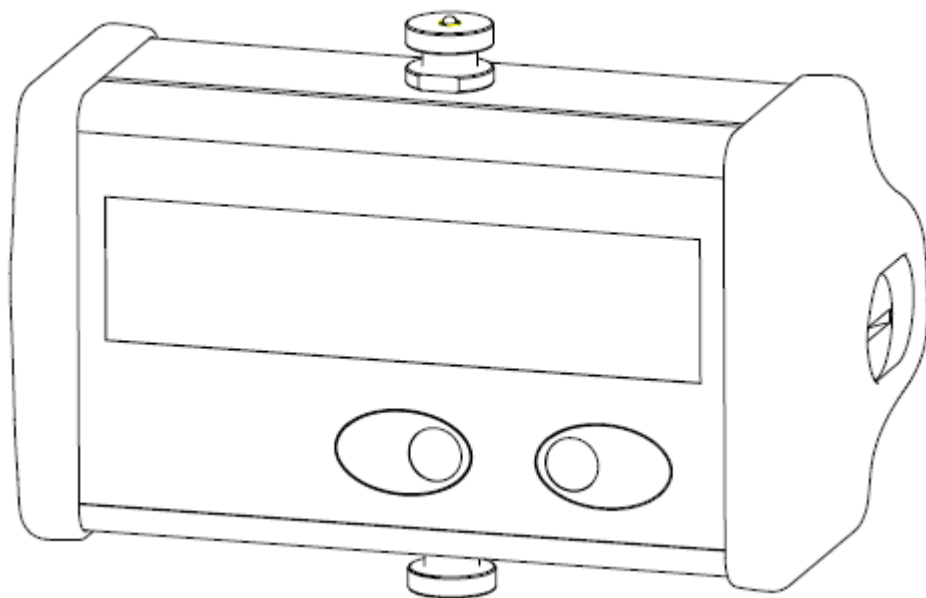


MANUAL

Crane Scale
(NAWI)

SLS...



Content Page	
Safety instructions	5
1 Introduction and appropriate use	7
2 Information on verified scales	9
2.1 Initial verification	9
2.2 Using verified scales in legal-for-trade operation	9
2.3 Declarations of conformity	10
3 Operating the crane scale	11
3.1 Display and control functions	11
3.2 Initial activation	12
3.3 Activation	13
3.4 Deactivation	13
3.5 Gross / net selection and taring	13
3.6 Zeroing	14
3.7 Changing the unit (kg <-> Lb)	14
3.8 Automatic zero tracking	14
3.9 Monitoring functions	15
3.10 Display values (factory defaults)	15
4 Setup dialog	16
4.1 Basic scale settings	16
4.2 Scale adjustment (Calibration in a partial load range)	17
5 Standard dialog / extended standard dialog	19
5.1 Counting scale	20
5.2 Power Off + Amplifier Filter	21
5.3 Mean-value calculation (Internal Conversion rate)	22
5.4 Automatic filter selection (Fast SettLing)	22
5.5 Gravitational acceleration at the place of installation (Gravity at destination)	24
5.6 Zero on startup (Zero Setting)	25
6 Replacing the battery	25
7 Attaching load application parts	25
8 Error messages	26
9 Specifications	27
10 Dimensions	28
11 Gravitational acceleration factors	29

This is a “Table of Contents preview” for quality assurance

The full manual can be found at <http://the-checkout-tech.com/estore/catalog/>

We also offer free downloads, a free keyboard layout designer, cable diagrams, free help and support.

<http://the-checkout-tech.com> : *the biggest supplier of cash register and scale manuals on the net*