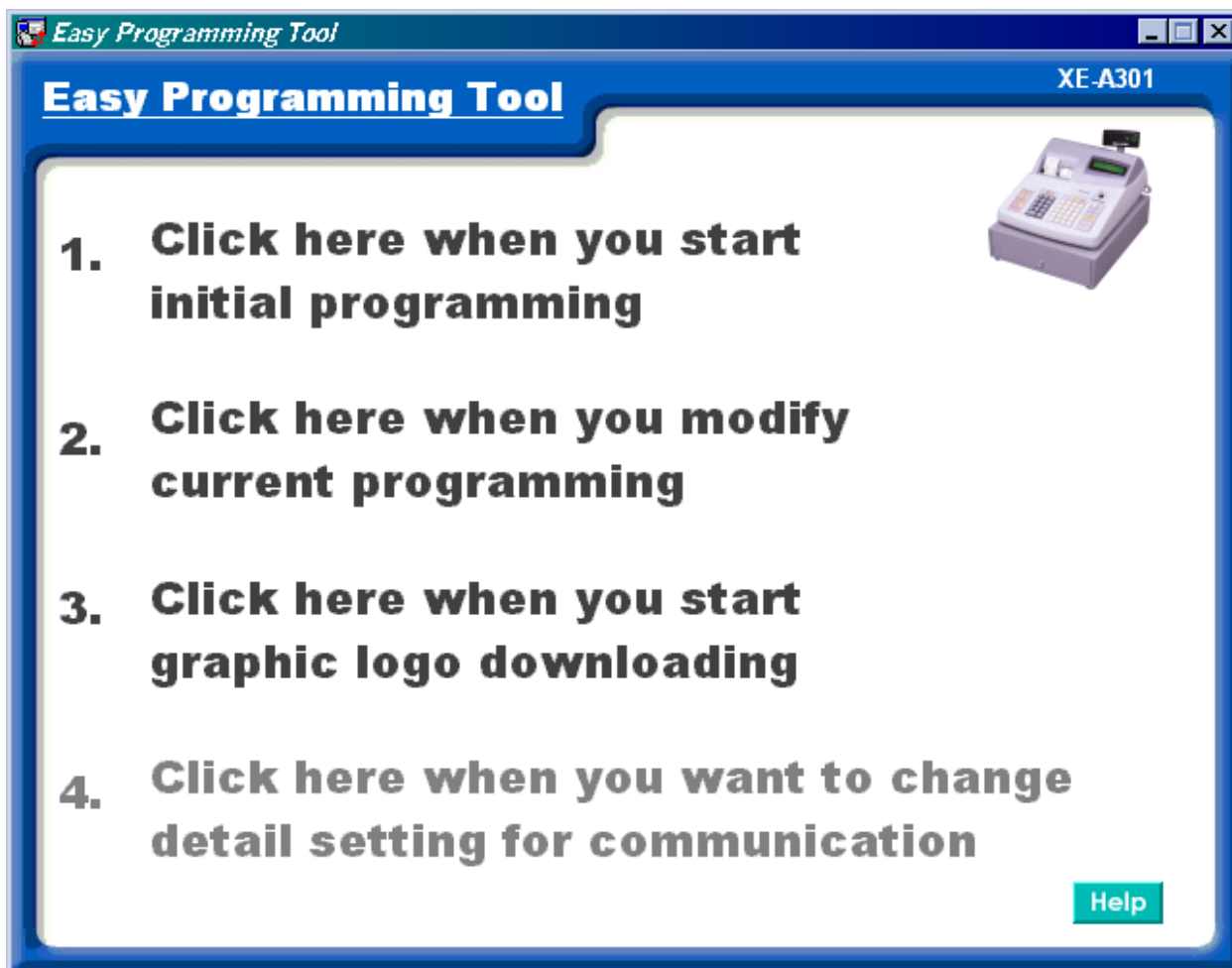


XE-A301 EASY PROGRAMING TOOL



Excerpts from Help File

Index

[What is Easy Programming TOOL?](#)

[Operating Environment](#)

[Functions](#)

[Graphic logo](#)

[Installation of Easy Programming Tool](#)

[Settings](#)

[Software operation](#)

[Serial Communication between ECR and PC](#)

[Glossary](#)

What is the Easy Programming Tool?

[{ Back to Index }](#)

The Easy Programming Tool is an application program for various settings of your ECR. It is helpful particularly when you wish to pre-set text data such as item names because you can input data by using your PC. This software works with Microsoft Windows 98/Me/2000/XP.

The Easy Programming Tool provides the following functions:

- a) Programming the settings of ECR on your PC.
- b) Receiving program data from the ECR.
- c) Sending program data to the ECR.
- d) Modifying the default ECR settings on your PC.
- e) Receiving the program data from ECR and modifying it.
- f) Modifying the program data saved in your PC.
- g) Saving the program data you have programmed on your PC.
- h) Creating a graphic logo on your PC.
- i) Sending the graphic logo to ECR.

Operating Environment

[{ Back to Index }](#)

This software requires these minimum PC requirements:

Hardware:

- IBM PC or 100% compatible
- 24 MB RAM
- 40 MB free hard disk space.

Operating System:

- Microsoft Windows 98/Me/2000/XP

[Click here to download the full manual at THE-CHECKOUT-TECH.COM](http://THE-CHECKOUT-TECH.COM)