

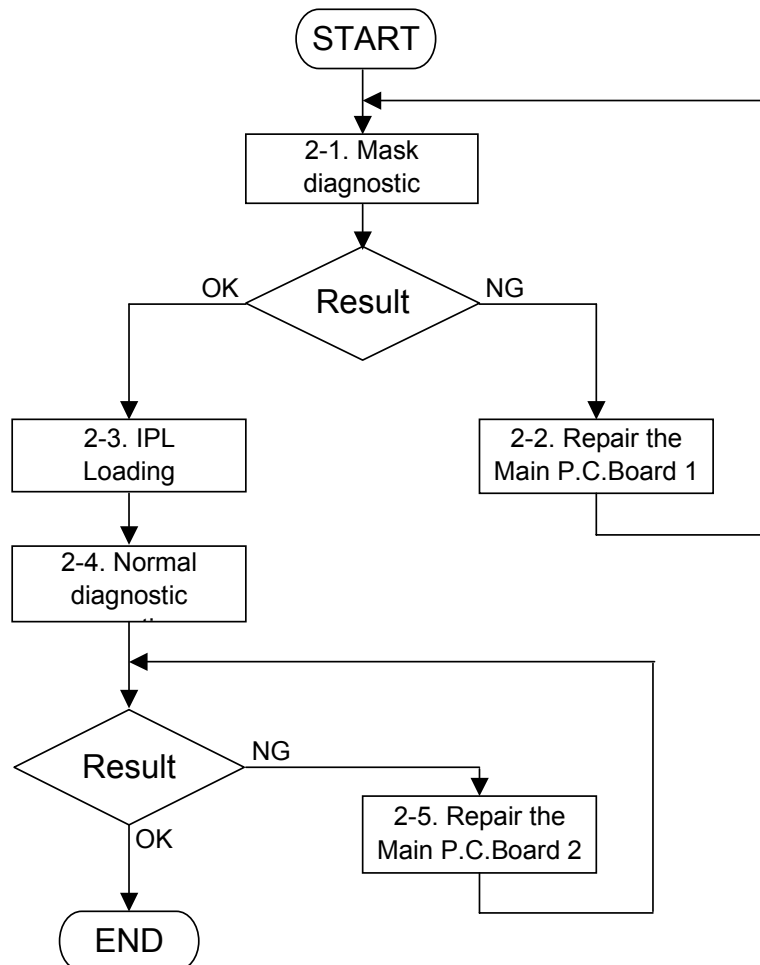
Trouble shooting guide for New ECR model

MODEL: CE-6000, CE-6100, CE-7000, TK-6000, TK-7000, TK-6500, TK-7500

< CONTENTS >

1. Flowchart for trouble shooting procedures
2. Trouble shooting procedures
 - 2-1. Mask diagnostic operation
 - 2-2. Repair the Main P.C.Board 1
 - 2-3. IPL loading
 - 2-4. Normal diagnostic operation
 - 2-5. Repair the Main P.C.Board 2
3. The example of repair
 - 3-1. How to remove the IC
 - 3-2. Preparation for mounting the new IC
 - 3-3. How to fix the IC
 - 3-4. Cleaning after mounting the IC

1. Flowchart for trouble shooting procedures



[Click here to download the full manual at THE-CHECKOUT-TECH.COM](http://THE-CHECKOUT-TECH.COM)