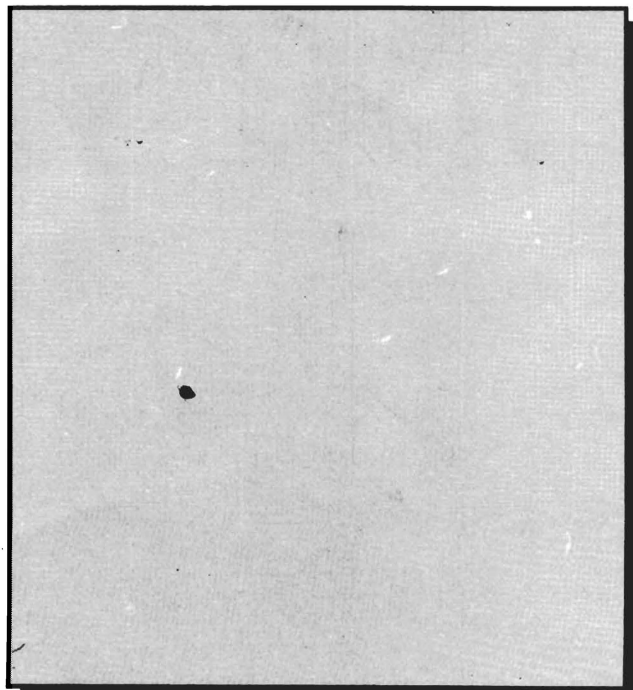
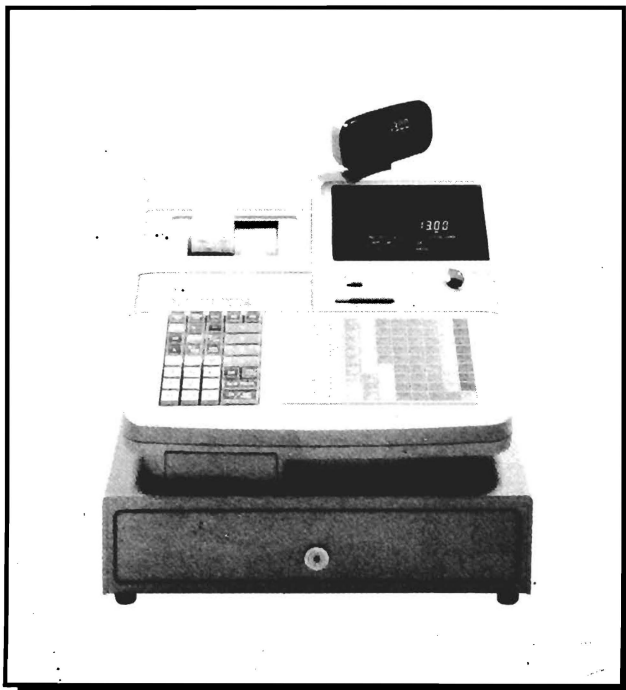
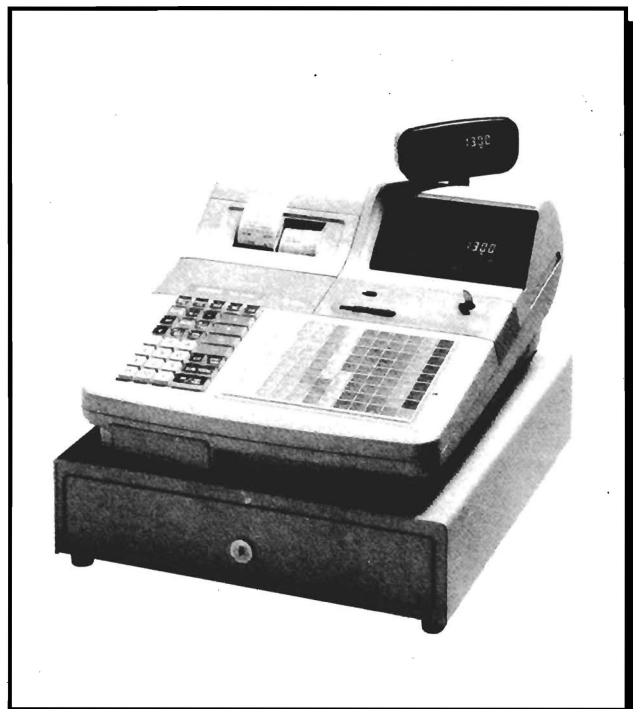
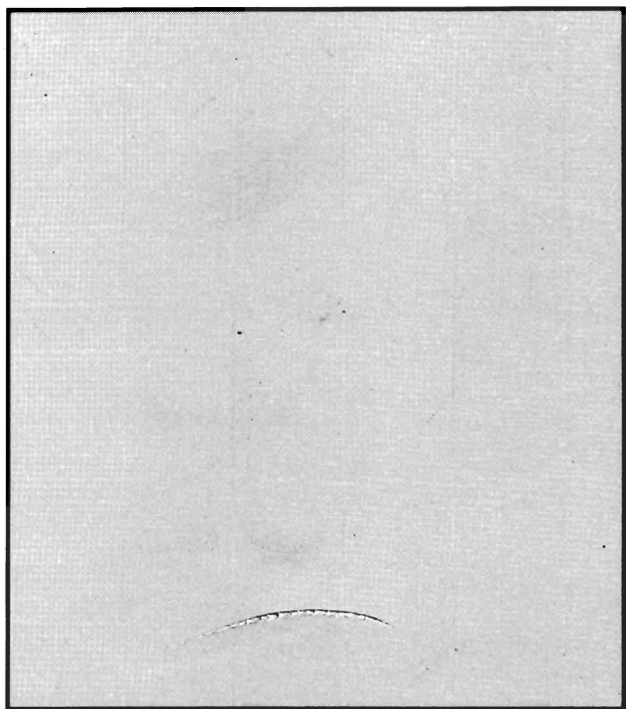


13
101 3
ELECTRONIC CASH REGISTER

TK-1300

OPERATION MANUAL



CASIO®

Contents

| | | |
|-----|--|----|
| 1 | Loading Receipt and Journal Paper | 1 |
| 1-1 | Removing Paper Rolls | 1 |
| | Receipt Paper | 1 |
| | Journal Paper | 1 |
| 1-2 | Loading Paper Rolls | 2 |
| | Receipt Paper | 2 |
| | Journal Paper | 2 |
| 2 | Before Starting | 3 |
| 2-1 | Long PLUs and Short PLUs | 3 |
| | Short PLUs | 3 |
| | Long PLUs | 3 |
| 2-2 | Errors | 4 |
| 2-3 | Rechargeable Batteries | 4 |
| 2-4 | Daily Register Operations | 4 |
| 3 | Basic Registrations | 5 |
| 3-1 | Assigning a Clerk | 5 |
| | Clerk Button | 5 |
| | Clerk Secret Number | 5 |
| | Training Clerk/Cashiers | 6 |
| 3-2 | Displaying the Time and Date | 6 |
| 3-3 | Making Change | 6 |
| 3-4 | Single Items and Cash Tenders | 7 |
| | Department Items | 7 |
| | Exceeding the Maximum Amount Limit | 7 |
| | Exceeding the Low Digit Limit | 8 |
| | Flat-Long PLU Items | 8 |
| | Flat-Long PLU Price Override | 8 |
| | PLU Items | 9 |
| | Sub-Department Items | 9 |
| | Random PLU Code Items (Long PLU Only) | 9 |
| 3-5 | Repeating Identical Items | 10 |
| | Department Items | 10 |
| | Flat-Long PLU Items | 10 |
| | Flat-Long PLU Price Override | 10 |
| | PLU Items | 11 |
| | Sub-Department Items | 11 |
| | Random PLU Code Items (Long PLUs Only) | 11 |
| 3-6 | Mixed Departments and PLUs | 12 |
| 3-7 | Subtraction | 12 |
| | Amount Reduction | 12 |
| | Discount for Item and Subtotal | 13 |
| 3-8 | Multiplication | 14 |
| | Department Items | 14 |
| | Flat-Long PLU Items | 15 |
| | PLU Items | 16 |
| | Sub-Department Items | 16 |
| | Random PLU Code Items (Long PLUs Only) | 17 |

Contents

| | | |
|------|---|----|
| | Split Sales of Packaged Items | 17 |
| | Method 1 | 17 |
| | Method 2 | 17 |
| | Measurement Extension for Sub-Department Item | 18 |
| | Measurement Extension for Random PLU Code Item (Long PLUs Only) | 18 |
| 3-9 | Taxable Transactions | 19 |
| | Tax Table 1 and Tax Table 2 | 19 |
| | Manual Tax and Tax Shift | 19 |
| | Rate Tax | 20 |
| | VAT Calculations | 20 |
| | Tax Exemption | 21 |
| 3-10 | Other Payment Media | 22 |
| | Check Payments | 22 |
| | Cashing Checks | 23 |
| | Charge Tender | 23 |
| | Credit Card Tender | 24 |
| | Mixed Tender | 24 |
| 3-11 | Switching Between REG 1 and REG 2 | 25 |
| 3-12 | Corrections | 26 |
| | Correction of Last Item Registered | 26 |
| | Correction of a Specific Item | 26 |
| | Cancellation of All Items Registered | 26 |
| 3-13 | Validation Slip Printing | 27 |
| 3-14 | Non-Sales Transactions | 27 |
| | Received on Account | 27 |
| | Paid Outs | 28 |
| | Pick Ups | 28 |
| 3-15 | Refunds | 29 |
| | Using the RF Mode | 29 |
| | To change from the Refund Mode to the Reg Minus Mode | 29 |
| | To change from the Reg Minus Mode to the Refund Mode | 29 |
| | Reg Minus Mode | 30 |
| | Normal Refund Transaction | 30 |
| | Subtraction and Discounts | 30 |
| | Refund Mode | 30 |
| | Normal Refund Transaction | 30 |
| | Subtraction and Discounts | 31 |
| | Refunds in the Reg 1 and Reg 2 Modes | 31 |
| 4 | Advanced Registration Functions | 32 |
| 4-1 | Registering Loan Amounts | 32 |
| 4-2 | Single Item Cash Sales | 32 |
| 4-3 | Shifting Menus | 33 |
| 4-4 | Addition | 34 |
| | Additional Charge | 34 |
| | Premium for Item and Subtotal | 35 |
| 4-5 | Tray Total Premium/Discount | 36 |
| 4-6 | Coupon Transactions | 37 |
| | Coupon Registration Using the Coupon Key | 37 |
| | Coupon Registration Using the Coupon 2 Key | 38 |
| 4-7 | Preset Tender Amounts | 39 |

Contents

| | | |
|------|--|----|
| 4-8 | Bottle Link Operation (Long PLU Only) | 40 |
| 4-9 | Bottle Returns | 41 |
| | Linked Bottle Return Key (Long PLU Only) | 41 |
| | Bottle Return Key | 41 |
| 4-10 | Arrangement Key Registrations | 42 |
| 4-11 | Set Menus | 43 |
| | Set Menus Using PLU Numbers (Long PLUs Only) | 43 |
| | Set Menus Using Flat-Long PLU Keys | 44 |
| 4-12 | Tips | 44 |
| 4-13 | Inputting the Number of Customers | 45 |
| 4-14 | Multiple Item Totaling Function | 46 |
| 4-15 | Text Recall Function | 47 |
| | Recalled Text | 47 |
| 4-16 | Foreign Currency Registration | 47 |
| | Conversion of a foreign currency to the local currency | 48 |
| | Partial amount tender in a foreign currency | 48 |
| | Full amount tender in a foreign currency | 48 |
| 4-17 | Temporarily Releasing Compulsories | 49 |
| 4-18 | Text Print Function | 50 |
| 4-19 | Food Stamps | 51 |
| | No Change Due | 51 |
| | Food Stamp Status Shift | 51 |
| | Mixed Food Stamp/Cash Change | 52 |
| | Food Stamp Transaction | 54 |
| | Cash Transaction | 54 |
| 4-20 | Food Stamps (Illinois Rules) | 54 |
| | No Change Due | 54 |
| | Food Stamp Status Shift | 56 |
| | Mixed Food Stamp/Cash Change | 56 |
| | Food Stamp Transaction | 58 |
| | Cash Transaction | 58 |
| | Food Stamp + Taxable 1 and Taxable 2 | 58 |
| | Method 1 | 58 |
| | Method 2 | 59 |
| 4-21 | Food Stamps (New Jersey Rules) | 60 |
| | No Change Due | 60 |
| | Food Stamp Status Shift | 61 |
| | Mixed Food Stamp/Cash Change | 61 |
| | Food Stamp Transaction | 63 |
| | Cash Transaction | 63 |
| 4-22 | Electronic Benefits Transfer Tenders | 64 |
| | About Mixed EBT Card Tenders | 64 |
| | No Change Due | 64 |
| | Change Due | 65 |
| 4-23 | Gas Departments | 66 |
| | Basic Registration | 66 |
| | Calculation of Discounts | 66 |
| | Discount Subtotal Key Operation | 67 |
| | Partial Cash Tender | 68 |
| | Error Correction | 69 |
| 4-24 | New Balance and Previous Balance | 69 |

Contents

| | |
|---|----|
| How the New Balance Totalizer works | 69 |
| Non-Taxable Transactions | 70 |
| First Transaction | 70 |
| Second Transaction | 70 |
| Taxable Transaction — 1 | 71 |
| First Transaction | 71 |
| Second Transaction | 71 |
| Taxable Transaction — 2 | 72 |
| First Transaction | 72 |
| Second Transaction | 72 |
| Taxable Transaction — 3 | 72 |
| First Transaction | 72 |
| Second Transaction | 73 |
| 4-25 Registrations that Move the Decimal Point | 73 |
| 4-26 VAT Breakdown Printing | 73 |
| 4-27 Deposit Registrations | 74 |
| Deposit Plus Key | 74 |
| Deposit Minus Key | 74 |
| 5 Read and Reset Reports | 75 |
| 5-1 Daily Sales Data READ (X1 Mode) | 75 |
| To prepare for daily sales data read | 75 |
| 5-2 Resetting Daily Sales Data (Z1 Mode) | 76 |
| To prepare for daily sales data reset | 76 |
| 5-3 Periodic Sales Read and Reset (X2/Z2 Mode) | 76 |
| To prepare for periodic sales data read and reset | 77 |
| 5-4 Issuing Reports | 77 |
| Read and Reset Reports | 77 |
| Programmability | 78 |
| Issuing Reports | 78 |
| Individual Read Reports | 78 |
| Individual Department | 78 |
| Individual Short PLU | 78 |
| Individual Long PLU | 78 |
| Individual Flat-Long PLU | 79 |
| Individual Read/Reset Reports | 79 |
| Individual Clerk Accountability | 79 |
| PLU Range Read/Reset Reports | 79 |
| PLU Daily Sales Range | 79 |
| PLU Periodic Sales Range | 80 |
| Individual Totalizer Reports | 81 |
| Report Code Table | 81 |
| To issue daily sales reset reports | 81 |
| To issue periodic sales read/reset reports | 82 |
| Financial Report | 82 |
| Batch Report Issuance for Report Groups | 82 |
| To batch issue reports | 82 |
| Example Report Printouts | 83 |
| 6 For the Manager | 86 |
| 6-1 Manager Control Mode (X1 Mode) | 86 |
| Entering the Manager Control Mode | 86 |
| 6-2 Assigning Drawers for Each Clerk | 87 |

Contents

| | | |
|-----|---|-----|
| 6-3 | Program 1 Programming | 87 |
| | To enter the Program 1 Mode | 87 |
| | To exit the Program 1 Mode | 87 |
| 7 | General Guide | 88 |
| 7-1 | Mode Switch and Keys | 88 |
| | Mode Switch | 88 |
| | MODE Control Keys | 89 |
| | United States/Canada/U.K. | 89 |
| | Other Areas | 89 |
| 7-2 | Keyboard and Keys | 89 |
| | United States and Canada | 90 |
| | Other Areas | 90 |
| | Micro-Touch Keyboard | 90 |
| | Changing Menu Sheets | 91 |
| | Numeric Keys | 91 |
| | Department Keys | 91 |
| | Flat-Long PLU Keys | 91 |
| | Function Keys | 91 |
| 7-3 | Displays | 96 |
| | Operator Display | 96 |
| | Rotary Customer Display | 97 |
| 7-4 | Printer | 98 |
| | Journal | 98 |
| | Receipts | 98 |
| | Receipt ON/OFF Switch | 99 |
| | Post-Finalization Receipts | 99 |
| | Validation | 100 |
| | Item Validation | 100 |
| | Subtotal Validation | 100 |
| | Total Amount Validation | 100 |
| | Paper Feed Keys | 100 |
| | Printer Key | 101 |
| | Caring for the Printer | 101 |
| | Stamp Ink Replenishment | 101 |
| | Replacing the Ink Ribbon Cassette | 101 |
| 7-5 | Cash Drawer | 102 |
| | Connecting the drawer | 102 |
| 8 | Troubleshooting | 103 |
| 9 | Error Messages | 104 |
| 10 | Memory Protection Battery | 105 |
| 11 | Options | 106 |
| 12 | Specifications | 107 |

This is a “Table of Contents preview” for quality assurance

The full manual can be found at <http://the-checkout-tech.com/estore/catalog/>

We also offer free downloads, a free keyboard layout designer, cable diagrams, free help and support.

<http://the-checkout-tech.com> : *the biggest supplier of cash register and scale manuals on the net*